



MODULAR 109 N. E. 38TH STREET
SERVICES COMPANY OKLAHOMA CITY, OK. 73105

PROJECT

REVISED

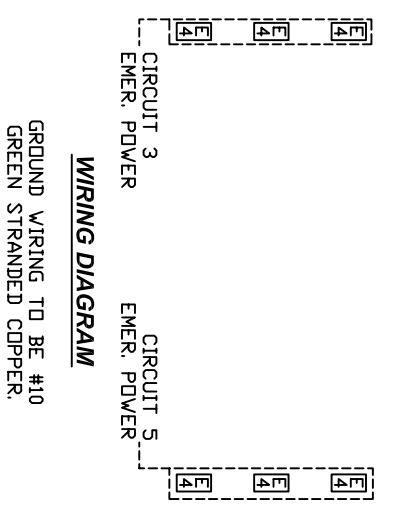
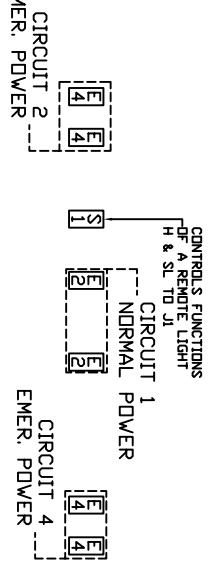
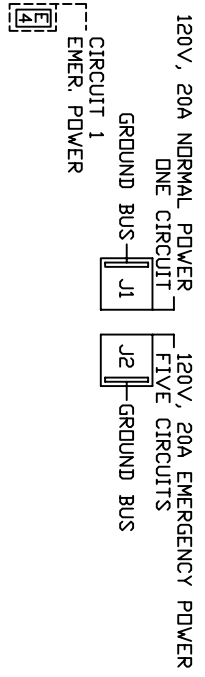
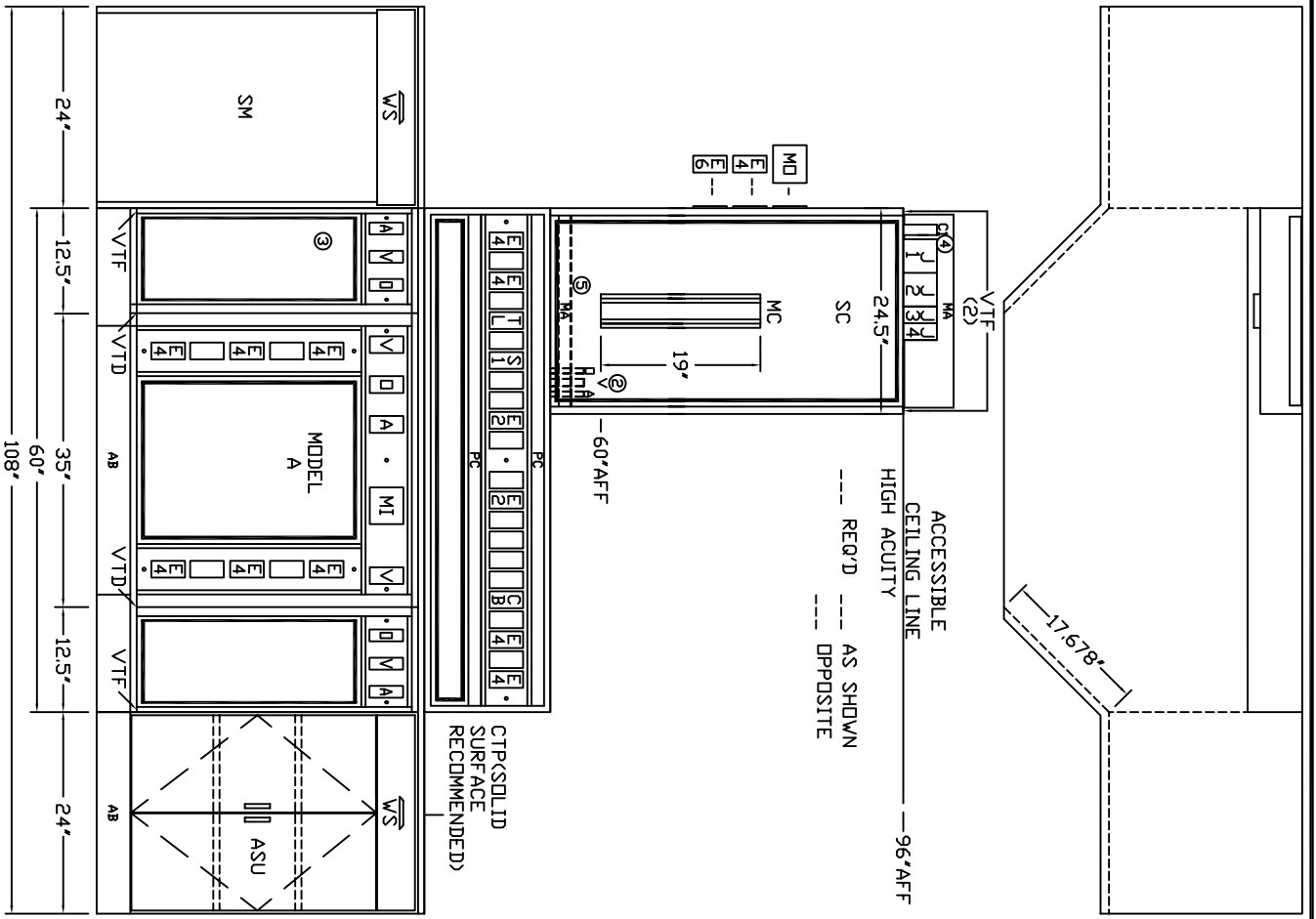
NEDONATAL INTENSIVE
 CARE UNIT
 TYPE A

SCALE: 1" = 1'

DATE: 03/21/05 DRAWN BY: DRAWING # PB-160

NOTES:

- ① JUNCTION BOXES: J1--NORMAL POWER, J2--EMERGENCY POWER, J3--CODE BLUE, J4--TELEPHONE.
- ② GAS PIPING: TYPE L COPPERTUBING. OXYGEN AND AIR--1/2" I.D., VACUUM--3/4" I.D.
- ③ PANEL LAMINATE COLOR: VERTICAL SURFACES TO BE DETERMINED.
- ④ HORIZONTAL SURFACES TO BE DETERMINED.
- ⑤ CONDUIT: C1--MONITOR (1-1/4"), SERVICES FROM THE LOWER SECTION WILL BE TERMINATED IN THIS AREA AND WILL REQUIRE FIELD ROUTING DURING INSTALLATION.



WIRING DIAGRAM

GROUND WIRING TO BE #10 GREEN STRANDED COPPER.

